

# Emergency Triage, Treat, and Transport (ET3) Model Overview

Center for Medicare and Medicaid Innovation  
Centers for Medicare & Medicaid Services (CMS)



# Agenda

- CMS Innovation Center
- Background and Opportunity
- ET3 Model Goals and Design
- Timeline and Next Steps

# CMS Innovation Center



# The CMS Innovation Center Statute

“The purpose of the [Center] is to test innovative payment and service delivery models to reduce program expenditures...while preserving or enhancing the quality of care furnished to individuals under such titles.”



## Three scenarios for success from statute:

1. **Quality improves; cost neutral**
2. **Quality neutral; cost reduced**
3. **Quality improves; cost reduced (best case)**

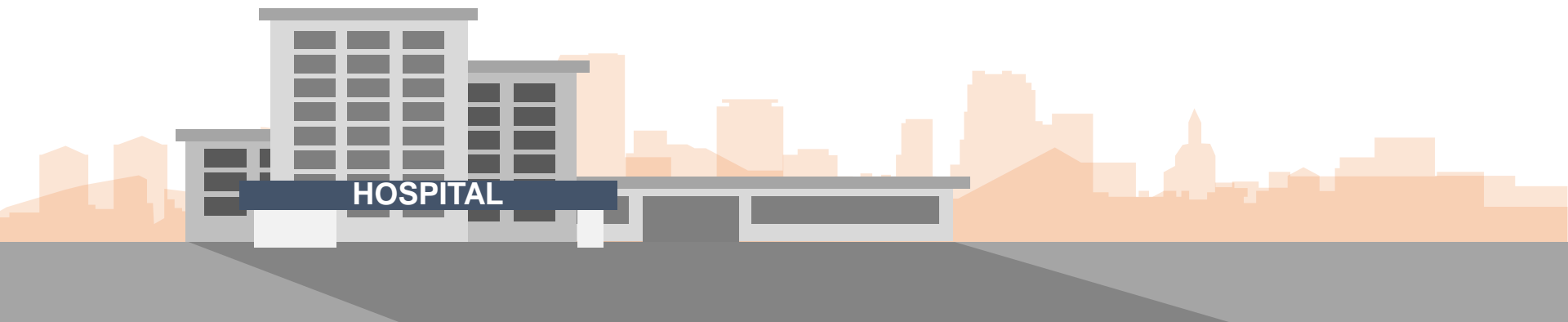
If a model meets one of these three criteria and other statutory prerequisites, the statute allows the Secretary to expand the duration and scope of a model through rulemaking.

# Emergency Medical Services

# The Problem: Misaligned Incentives

Medicare primarily pays for emergency ground ambulance services when individuals are transported to a limited number of covered destinations like hospital emergency departments (ED).

Therefore, beneficiaries who call 911 with a medical emergency are often transported to a high-acuity care setting, even when a lower-acuity, less costly destination may be more appropriate.



# The Opportunity: Optimal Care at the Right Time and Place

16%

Medicare fee-for-service emergency ambulance transports to the ED that could have been treated in lower-acuity settings.

\$560M

In savings per year by transporting individuals to doctors' offices rather than a hospital ED

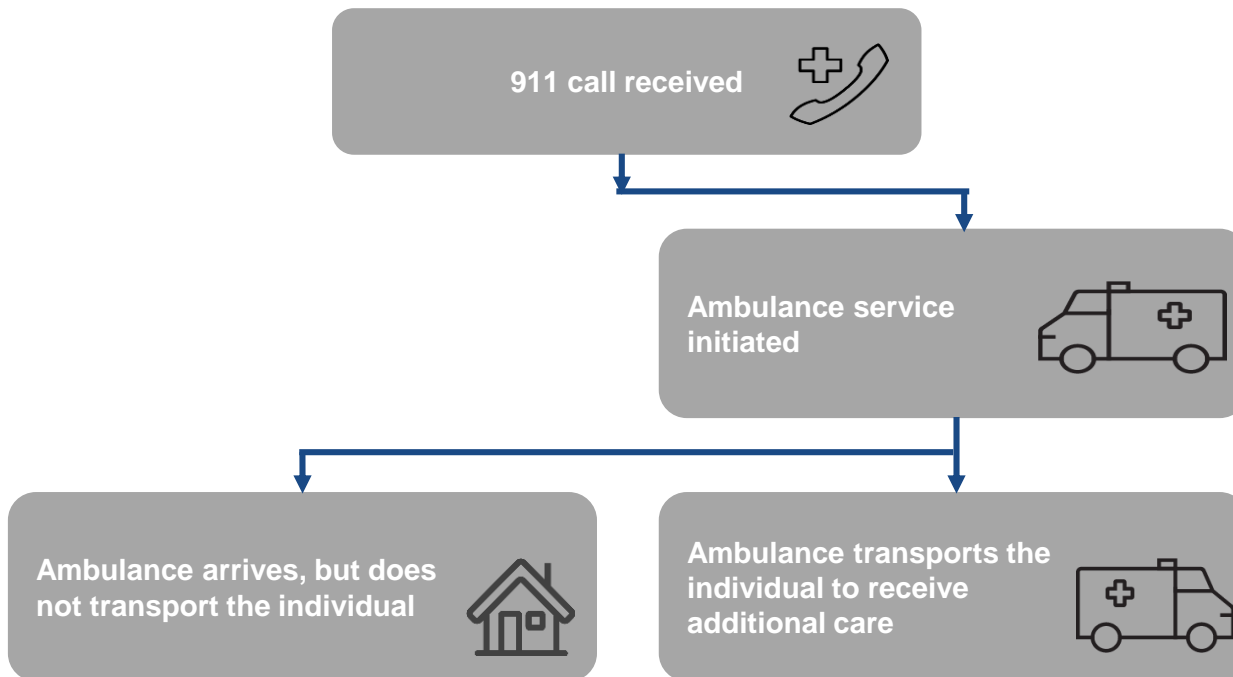
*\*An earlier White Paper by the U.S. Departments of Health and Human Services and Transportation found this savings potential; An important note is that by taking into account avoided inpatient hospitalizations and opportunities for treating in place, the savings potential and quality of care improvements may be even greater.*

# Emergency Triage, Treat, and Transport (ET3) Model



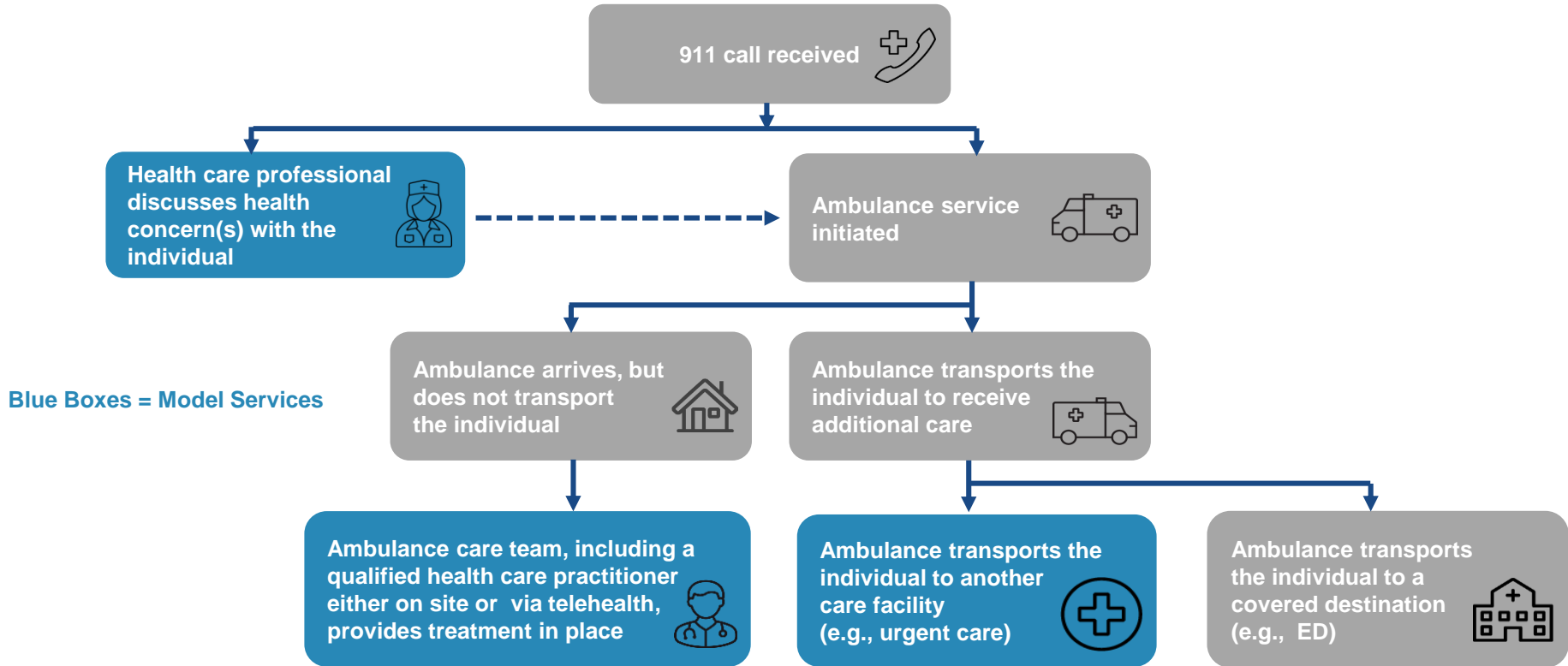
# Current State

Ambulance dispatched regardless of acuity, with transport to ED even if lower-acuity alternatives could safely meet an individual's needs.

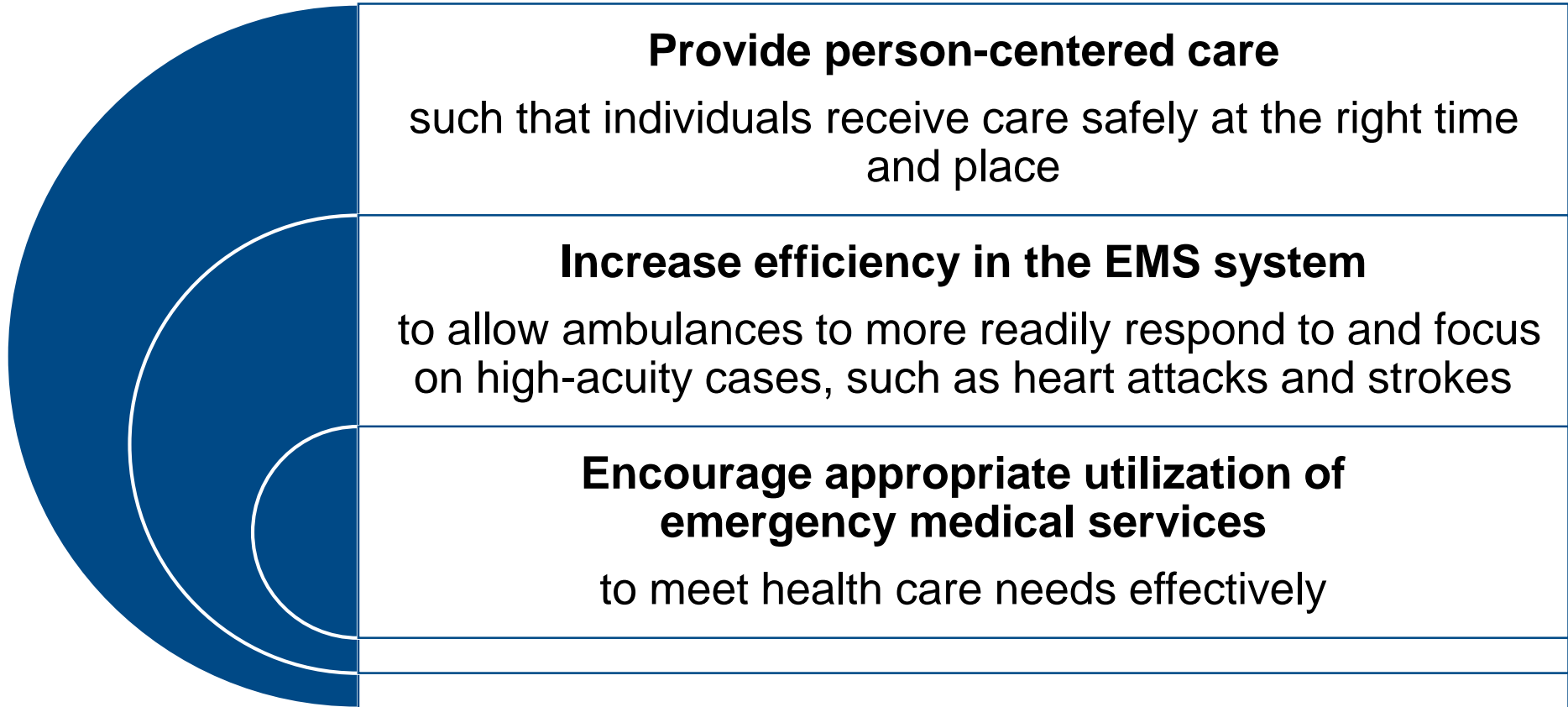


# Re-aligning Incentives for Future State

New options help individuals get the care they need and enable ambulances to work more efficiently.



# ET3 Model Goals



# ET3 Model Participants and Awardees

Together, ambulance suppliers and providers will focus on direct services, while local governments, its designees, or other entities that operate or have authority over one or more 911 dispatches that receive cooperative agreements will create a supportive structure to ensure successful and sustainable delivery of those services.



## **Medicare-Enrolled Ambulance Suppliers & Providers**

will support EMS innovation by transporting Medicare FFS beneficiaries to covered destinations (e.g., ED) or alternative destinations, and by providing treatment in place with a qualified health care practitioner (on site or via telehealth). Participation via the *Request for Applications (RFA)*.



## **Local Governments,**

its designees, or other entities that operate or have authority over one or more 911 dispatches will promote successful model implementation by establishing a medical triage line for low-acuity calls received via their 911 dispatch system. Participation via a *Notice of Funding Opportunity (NOFO)*.

# ET3 Model Payment Approach

New available payments under the model will build off of Medicare's existing fee-for-service structure.

Payment for  
Ambulance transport  
to alternative  
destinations

Payment for  
Treatment in place  
via a qualified health  
care practitioner

Performance-based  
payment adjustment  
for achievement on  
key quality  
measures

# Timeline

**Summer 2019** | Request for Applications (RFA) release

**Fall 2019** | Announce participants

**Fall 2019** | Notice of Funding Opportunity (NOFO) release

**Early 2020** | Model Go Live; Award cooperative agreements

# Resources and Contact Info

- The main source of information is the ET3 model website: <https://innovation.cms.gov/initiatives/et3>
- The ET3 model team can be reached at: [ET3Model@cms.hhs.gov](mailto:ET3Model@cms.hhs.gov)

Thank you for your interest in the CMS Innovation Center and the ET3 model.