

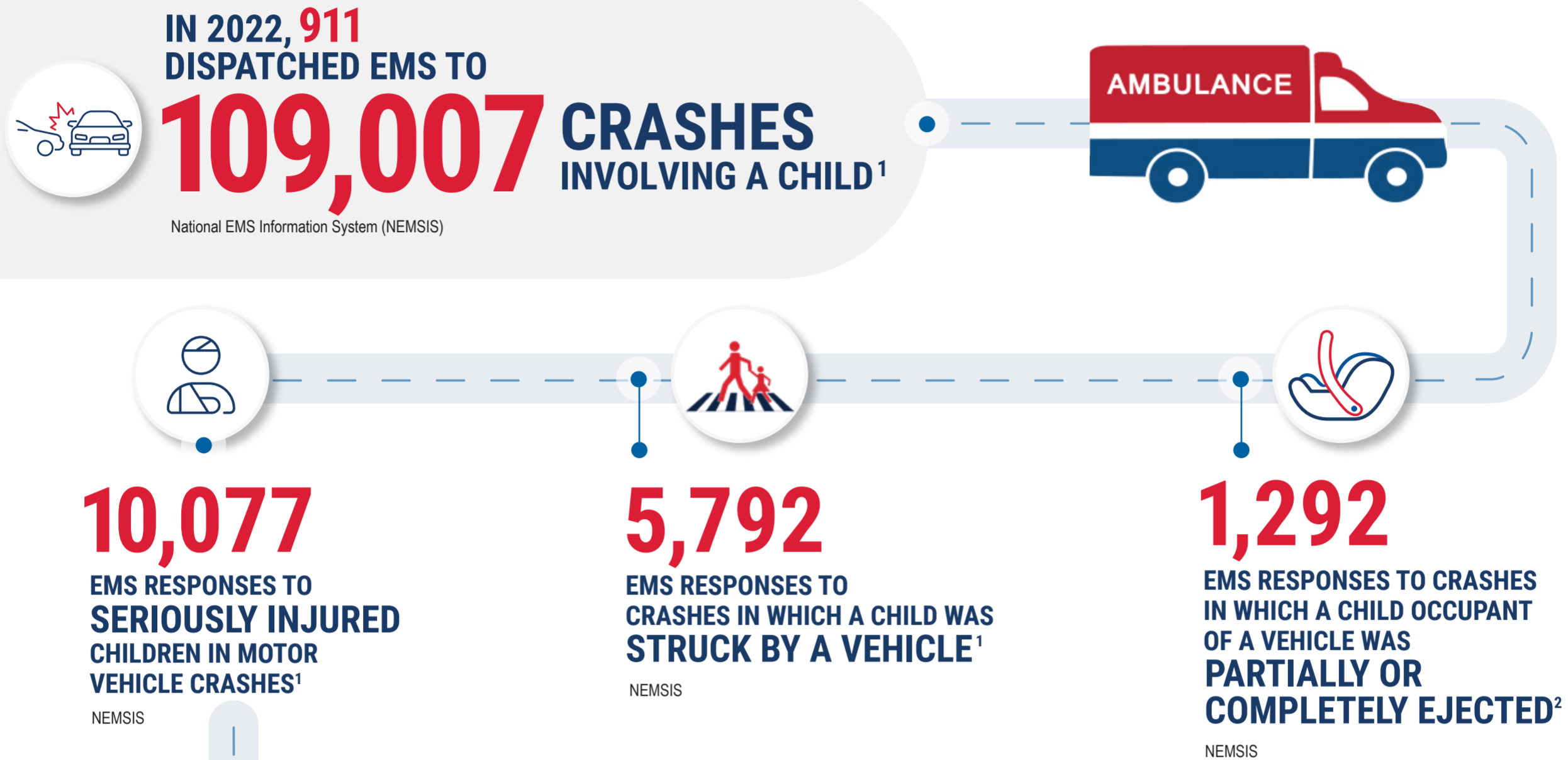
POST-CRASH CARE FOR CHILDREN

SAVING PEDIATRIC LIVES ON ROADWAYS



PROBLEM IDENTIFICATION

Children are defined as 14 years old and younger.



1,129 CHILDREN DIED IN TRAFFIC CRASHES...³

Fatality Analysis Reporting System (FARS)



...BUT **55%** OF THOSE WERE ALIVE WHEN FIRST RESPONDERS ARRIVED.³

FARS

COUNTERMEASURES



EMERGENCY MEDICAL DISPATCH
911 PROTOCOLS



TIMELY ON-SCENE CARE
USING MODEL EMS CLINICAL GUIDELINES



TRANSPORTATION TO A PEDIATRIC-READY EMERGENCY DEPARTMENT

PEDIATRIC READINESS IS ASSOCIATED WITH A 60% LOWER MORTALITY RATE IN INJURED CHILDREN.⁴



PEDIATRIC EMERGENCY CARE COORDINATORS

ACT AS ADVOCATES AND GUIDES FOR THE EMERGENCY CARE OF CHILDREN.

HIGHWAY SAFETY PLANNING FOR POST-CRASH PEDIATRIC CARE



1. ACCESS YOUR STATE'S PEDIATRIC CRASH DATA TO IDENTIFY PROBLEMS AND OPPORTUNITIES FOR IMPROVEMENT.



2. CONNECT WITH YOUR STATE EMS OFFICIAL AND STATE HIGHWAY SAFETY OFFICE TO ADDRESS SPECIFIC CRASH PREVENTION AND PEDIATRIC POST-CRASH CARE CHALLENGES.



3. INTEGRATE PEDIATRIC POST-CRASH CARE INTO YOUR HIGHWAY SAFETY PLAN.

References

- NEMSIS Database, 2022 Data. Report generated 10/2/2023.
- NEMSIS Database, 2022 data. Report generated 10/2/2023. Number of EMS Responses to Crashes in which a Pedestrian Vehicle Occupant was Partially or Completely Ejected includes EMS activations with eInjury.01 equal to ICD-10-CM codes within the following ranges: V40-49, V50-59, V60-69, or V70-79. Note: NEMSIS continuously receives data from clinical electronic patient care reports. These data may change as records are received or corrected.
- FARS 2022 Annual Report File (ARF). Report generated 4/15/2024, Version 7.2, released 4/1/2024.
- "Emergency Department Pediatric Readiness and Short-term and Long-term Mortality Among Children Receiving Emergency Care." JAMA Network Open, January 2023. Child(ren) defined as younger than 18 years. Accessed 2/27/2024.

